



DC TACHOGENERATOR

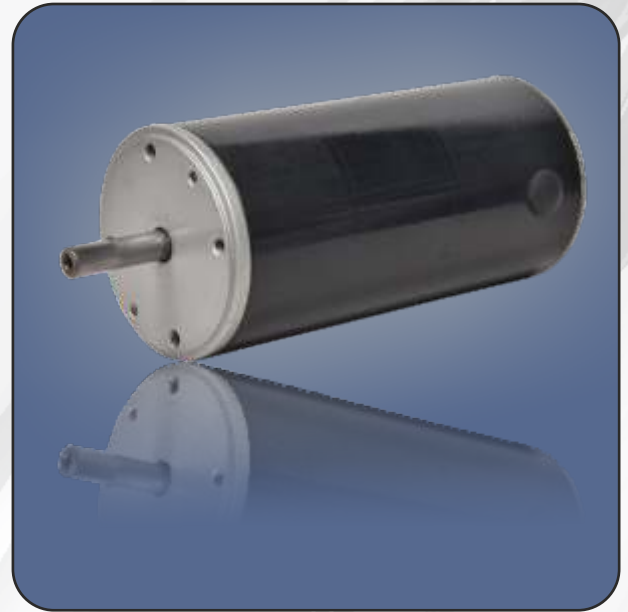
E-SM60

INTRODUCTIONS :

EXCELLA have been continuously manufacturing tachogenerator over 50 years. Tachogenerator is an electric generator that provides a voltage proportional to the speed, Tachogenerator use has numerous advantages, those are frequently use to measure engine & motor speed. As well as the corresponding speed of powered equipment such as conveyors, mixers, fans & machine tools.

FEATURES :

- Robust Design
- Precise Output & High Performance
- Economical model for universal application



TECHNICAL DETAILS:

Voltage Per 1000 r/min	10V± 5%
I max	50 mA @ 30V
Max O/p Voltage	30VDC
Armature Resistance	12.1 Ω± 10%
Max Speed Range	3000 RPM
Max Load Impedance	1000 Ω
Max ripple Voltage	≤ ±1%
Voltage Regulation	≤ ±5%
Linearity	≤ ±0.5%
Class of Insulation	F
Carbon Brush	1 Nos Per Arm
Brush Grade	Carbon Graphite
Protection	IP 44 Totally Enclosed
Connections	Cable
Ambient Temperature	60 Deg.C
Weight (Flange Type)	1.4 Kg



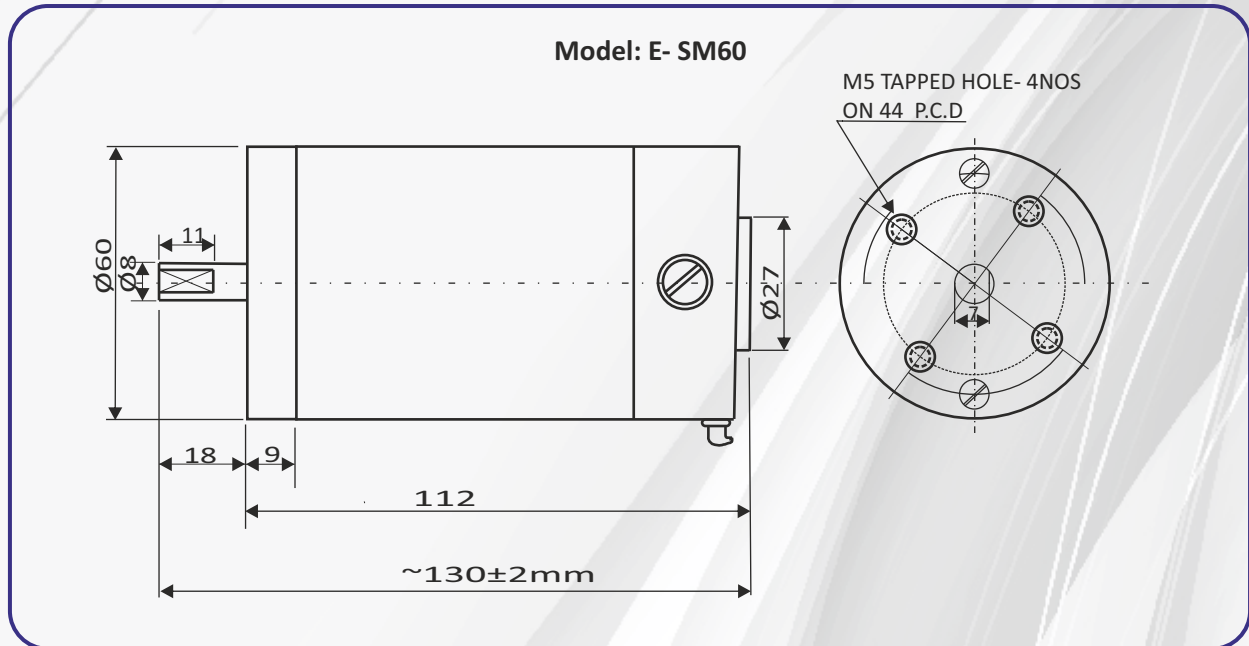
54, Annapurna Industrial Estate, Tilak Road,
Ghatkopar (E), Mumbai - 400 077 India
Tel: +91-22-21029911
E-mail: sales@excellaelectronics.com



DC TACHOGENERATOR

E-SM60

MECHANICAL DIMENSIONS:



NOTE : UNTOLERATED DIMNS. SHOWN ARE APPROXIMATE ONLY,
ALL DIMENSIONS ARE IN MM.